

FOR IMMEDIATE RELEASE

FANUC INTRODUCES FASBacCNC POWERFUL & EASY TO USE NETWORK BASED BACKUP SOLUTION FOR CNC FILES

ROCHESTER HILLS, MI – (January 26, 2015) FANUC America Corporation introduces FASBacCNC (FOCAS Automation Solution Backup CNC), a powerful and easy to use network based backup solution for FANUC CNCs. FASBacCNC eliminates the risk of one of the most common and expensive service interventions - extended downtime as a result of the loss of critical files on the CNC following a hardware failure or operational mistake.

FASBacCNC provides peace of mind by automatically backing up the CNC files that have been created and customized by the machine tool builder or end user to a remote network server. Files backed up can include CNC parameters, PMC ladder and parameters, custom macros and variables, part programs, tool offsets and workpiece coordinate system offsets.

FASBacCNC is a front end application that interfaces with FANUC's FASConnect server for file browsing, scheduling and backup operations for FOCAS enabled FANUC CNCs. FASBacCNC can work with multiple FASConnect servers across an entire network, so that files from a single machine, work cell, factory or even multiple factories can be combined into a single configuration for backup scheduling. FASBacCNC can be used on any personal computer on the network located out in the factory, back in an office or from a remote location.

Users browse their FASConnect servers with easy to use drag & drop navigation. Individual files can be uploaded manually or multiple files from multiple CNCs across the network can be included in a configuration. Multiple configurations can then be combined into a single scheduled backup. Powerful and flexible scheduling allows automatic backup to be executed hourly, daily, weekly or monthly. Users may also execute schedules manually for immediate needs. Users receive email notifications relating to the scheduled backup status.

FASBacCNC is the latest addition to the FAS (FOCAS Automation Solution) lineup. The complete FAS (FOCAS Automation Solution) suite includes: FASBacCNC – a user interface for FASConnect allows browsing of all FASConnect servers and backup data either manually or on a scheduled basis, FASConnect - a Windows® service allows access and management of text data from all FOCAS enabled CNCs across a network, FASOPC - an OPC 3.0 compliant server for easy retrieval of machining data from all FOCAS enabled CNCs.

About FANUC CORPORATION

FANUC CORPORATION, headquartered at the foot of Mt. Fuji, Japan, is the global leader and the most innovative manufacturer of Factory Automation, Robots and ROBOMACHINEs in the world. With over 230 offices in 45 countries, FANUC provides world-class service and support to customers globally. Since its inception in 1956, FANUC has contributed to the automation of machine tools as a pioneer in the development of computer numerical control equipment. FANUC technology has been a leading force in a worldwide manufacturing revolution, which evolved from the automation of a single machine to the automation of entire production lines.

About FANUC America Corporation

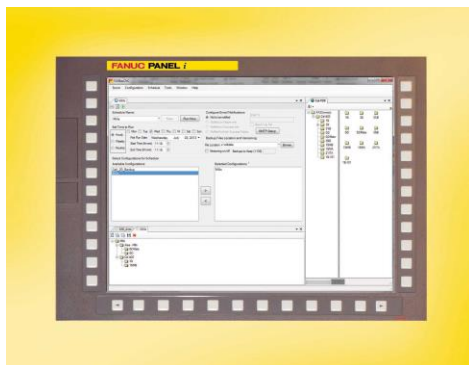
[FANUC America Corporation](#) is headquartered at 3900 W. Hamlin Road, Rochester Hills, MI 48309, and is a subsidiary of FANUC CORPORATION in Japan. FANUC America provides innovative automation solutions in the Americas including industry-leading CNC systems, robotics and factory automation solutions with 39 locations supporting customers throughout North and South America. For more information about FANUC America Corporation, call: 888-FANUC-US (888-326-8287) or visit our website: www.fanucamerica.com. Also, connect with us on [YouTube](#), [Twitter](#), [Facebook](#), [Google+](#) and [LinkedIn](#).

PR contacts:

Jill Jozwik
Marketing Manager – CNC
FANUC America Corporation
T: 847-898-5673
E: jill.jozwik@fanucamerica.com

Cathy Powell
Industry Marketing Manager – Robotics and ROBODRILLS
FANUC America Corporation
T: 248-377-7570
E: cathy.powell@fanucamerica.com

Caption:



FASBacCNC from FANUC America is a powerful and easy to use network based backup solution for CNC files.