

M-410/800F-32C



Max. load capacity
at wrist: 800 kg



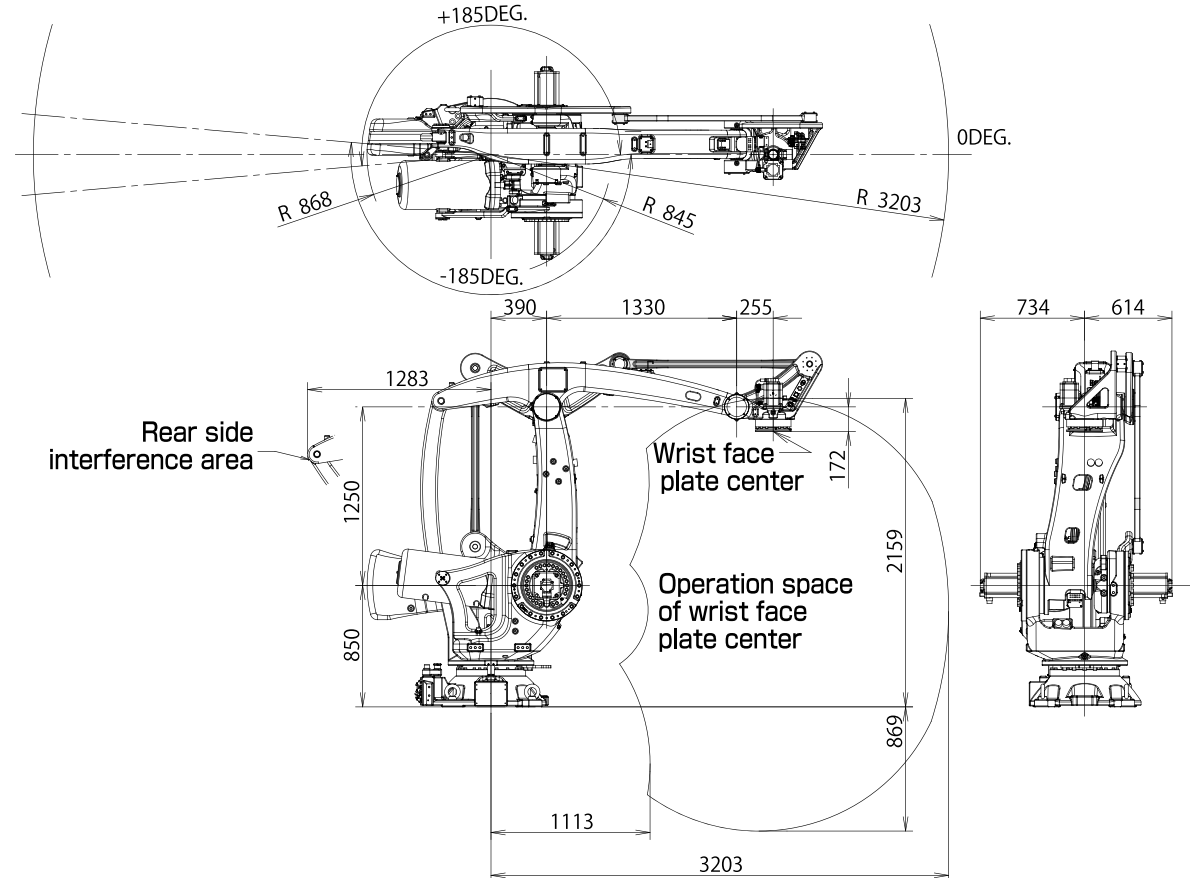
Max. reach:
3203 mm

FANUC

Robot		Max. load capacity at wrist (kg)	Reach (mm)	Controlled axes	Repeatability (mm)	Mechanical weight (kg)	Motion range (°)						Maximum speed (°/s)*						Moments (N-m)/Inertia (kg-m ²)			Average Power consumption (kW)	Protection	
Series	Version						J1	J2	J3	J4	J5	J6	J1	J2	J3	J4	J5	J6	J4 Moment/Inertia	J5 Moment/Inertia	J6 Moment/Inertia		Body standard/optional	Wrist & J3 arm standard/optional
M-410	C	800	3203	4	±0.05**	2500	370	144	136	720	-	-	65	65	65	125	-	-	880	-	-	3	IP54	IP54

● standard ○ on request - not available *During short distance motions, the axis speed may not reach the maximum value stated ** Based on ISO9283

M-410/800F-32C Hollow wrist



M-410/800F-32C